

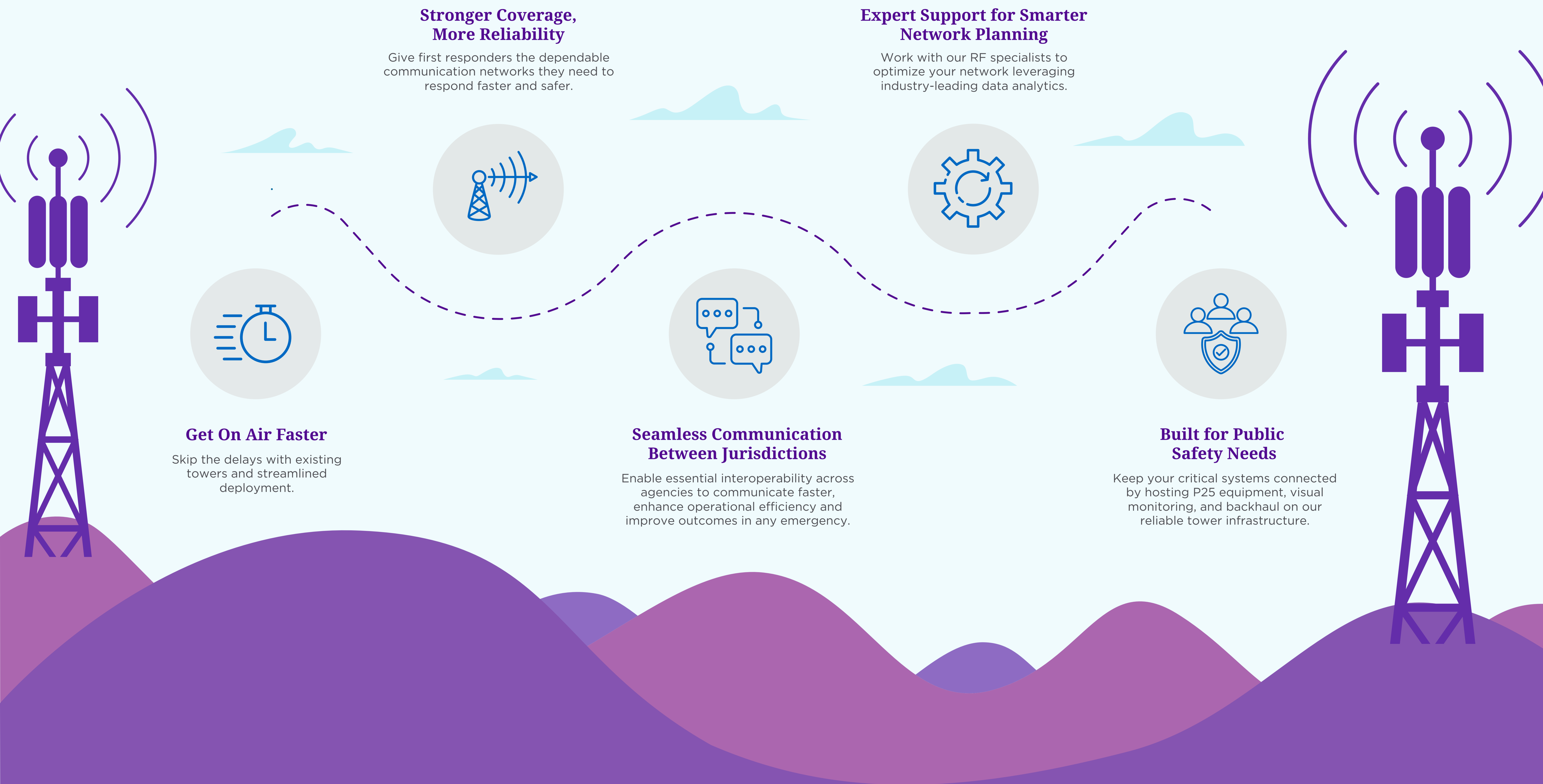
# Close the Gaps in Critical Public Safety Communication.

Reliable connectivity is essential for public safety — especially during emergencies when every second matters. But outdated systems and limited coverage continue to hinder coordination across agencies and jurisdictions. Crown Castle's nationwide network of cell towers supports seamless, interoperable communication, helping first responders stay connected without the delays or expense of building new towers.

**60%** of first responders face failures during joint operations due to incompatible radios.  
(Source: DHS SAFECOM)

**\$1.5B** is the average price tag of comms breakdowns in major disasters.  
(Source: National Emergency Communications Plan)

## Your Network Partner in Public Safety.



**Don't wait for the next emergency.**  
Power your communications with Crown Castle's reliable infrastructure that is built for public safety.  
Call 1-888-301-3822

